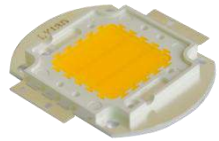




Autotronic-SMT GmbH



경제적인 가격. 효율적 생산성 높은 장비 **In Line Tube**. 범용 SMD Pick & Placement  
LED 전용. 범용 양산. 중 양산. 소량 다품종. Proto type 생산 장비 들



<https://youtu.be/4JemRpYIOsM>



LED. SMT 장비 Asia 지역 전문 판매. 중국. 베트남. 태국. 인도네시아 . 대만

- 프린터+마운터+Reflow Spec

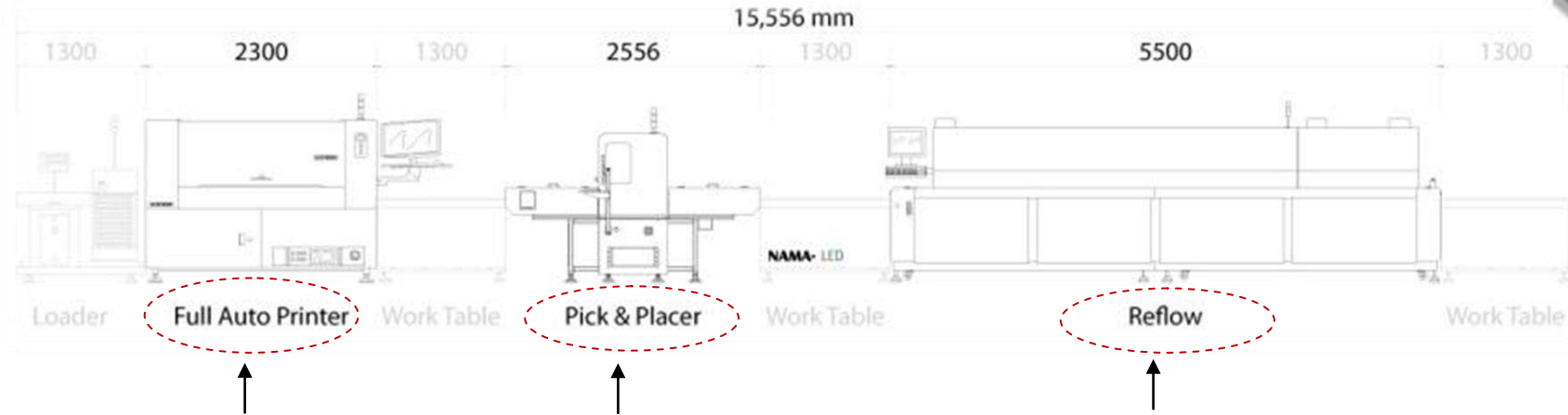
# 1. LED 양산 생산을 위한 장비 구성도 ( Full Automatic Printer )

작용 업종 : Tube Light (형광등 1.2m / 2.4m) 가로등 조명 .인테리어 산업용 조명



Chip 작업 범위

FOR COMPONENTS:



Loader 1200 x 800mm	Stencil Printer AP1500 Full Automatic 2300x1704x1878mm	Work Table Station 1200x800mm	전용 LED LD812V Pick & Place 1.2 /1.5m 2630x1130x1490mm	Work Table Station 1200x800mm	Reflow 8 to 10 Hot Air Reflow 2 x Flux Filter System. N2 (op) 6300 x 1360 x 1550mm	Work Table Station 1200x800mm
------------------------	--	-------------------------------------	---	-------------------------------------	--	-------------------------------------

4V : 8Hr 120,000점 / 20Hr 300,000점

6V : 8Hr 144,000점 / 20Hr 360,000점 Dav

## 장비 설명

1. Stencil Printer	1.2m full vision 자동 프린터. Stencil 자동 크리너 기능 Windows 환경에서 제어합니다.
2. LED 마운터 실장속도	4개 혹은 6개 Fly Vision 기본 장착된 LED 전용 장비, Fly Vision은 1 x 0.5mm에서 8 x 8mm 까지 인식 ( 3 Head 모델은 14 x16mm) 4 Head 15,000 cph / 6 Head 18,000cph Conveyor는 table type이 기본이며 In Line 작업을 위하여 별도의 Belt Conveyor 선택을 하여야 한다
3. Reflow	Reflow는 full Air Convection으로 Flux 필터 시스템이 기본 내장 되어 있다. 3 채널 Temperature Profiler. Quick Cool Down, 장비 환경 History 기능이 있으며, Tube LED 생산을 하지 않는 고객은 8 zone Reflow 선택 사용 가능하다.

- Loader. work Table은 제품 생산에 따라 길이가 상이 할 수 있습니다. Printer + LED P&P + Reflow의 길이는 10.4m 입니다



## 1-2. LED 양산 생산을 위한 장비



<https://youtu.be/4JemRpYIOsM>

양산 Line 장비 SPEC LED 전용

세부적인 SPEC은 [www.namaSMT.com](http://www.namaSMT.com) 방문 바랍니다



Model	Printer AP1200	LED Pick & Place LD812V4/V6	Reflow CR-10100NP-F
	1. Double side board printing 2. Max : 1200 x 300 mm 3. Thickness : 0.4 ~ 5mm 4. Automatic Vision Alignment 5. Accuracy : +/-0.01mm 6. Operating Windows 7 base	1. Vision on the fly cameras 2. Head Q'ty : 4 EA / 6EA 3. Work:1200x300 (1200x250mm) Conveyor 4. Speed: 15 000 cph / 18,000 cph 5. Feeder Bank : Max.16 6. Accuracy: +/-0.05mm	1. Heating Zone 10 Zone. ● Max 350°C 2. Max.550 width. N2.(op) Center rail 3. 2 x Flux Filter System. 4. Cooling system function 5. 3 x Channel Temperature Profiler 6. reflow operation History backup
Dimension	● 2300x1704x1878mm (1200kg)	● 2630 x 1130 x 1490mm (450kg)	● 6300 x 1360 x 1550mm, (2050kg)
AC Power	■ 220V, 50/60Hz 2.5KW (single)	■ 220V, 50/60Hz 2,2KW (single)	■ 3P x 380V+/N(220V)50/60Hz 75KW
Air (W.D.H)mm	⊙ 5 Bar / 75 psi	⊙ 5.5 Bar / 80 psi	⊙ 7.5 Bar / 90 psi

- 장비 설치에 따른 공간, 전기, Air등에 대한 자료 참고 바랍니다.

PRICE exwork

not Include option & packing charge



	Printer AP1200	LED Pick & Place LD812V4/V6	Reflow CR-10100NP-F ( 10 zone )
Price	USD	1. LD812V4 / 4 head USD 2. LD812V6 / 6 head USD	1. 8 zone with Flux 필터시스템 USD 2. 10 zone with Flux 필터시스템 USD

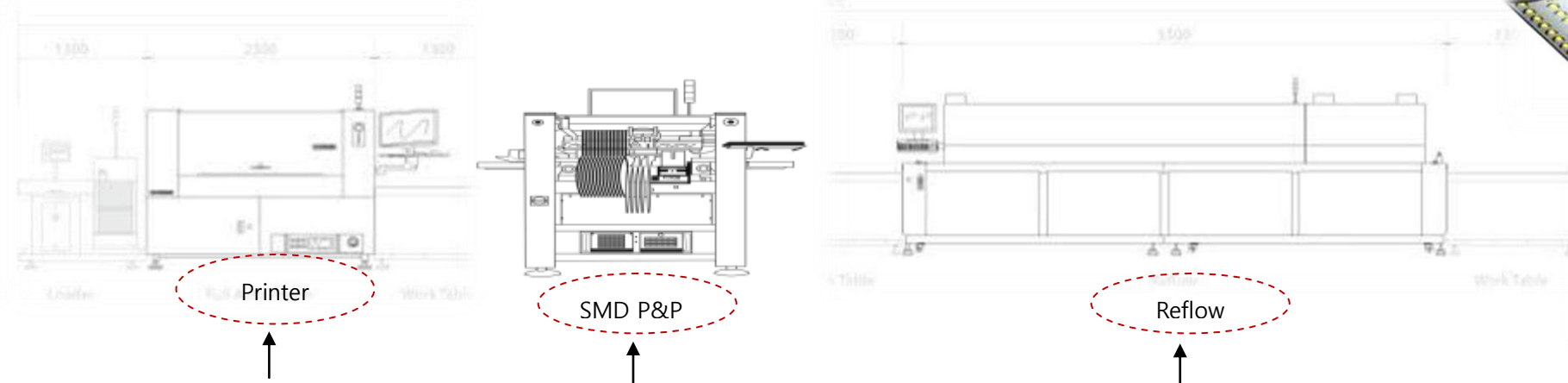
- 판매는 OFFER 방식으로 진행 합니다. 이러한 이유는 고객에 따라 관세면제, 감면 등이 사업 품목에 따라 적용되기 때문입니다.
- 또한 장비 금액 외 Option + 포장 + 운송 + 통관 등에 대한 비용은 포함 되어 있지 않습니다

Chip 작업 범위



## 2. LED 혹은 범용 SMD생산 장비 구성도.

적용업종 : Tube Light (형광등, LED조명), 인테리어, 1.2m Switch Power, Other SMD Assembly에 적합)



Loader 1.2m	Stencil Solder Printer. AP 1500	Work Table Station	LED (범용 Chip Mount) Pick & Place 1.2 /1.5m	Work Table Station	Reflow 8 to 10 Hot Air Convection Reflow 2 x Flux Filter System. N2(op) Quick Cool Down	Work Table Station
Size	2300x1704x1878mm	1200x800mm	1780x 1370x 1460mm	1200x800mm	5650 x 1350 x 1559mm	1200x800mm

2V : 8Hr 51,200점 / 20Hr 128,000점  
 4V : 8Hr 67,200점 / 20Hr 168,000.점 Day.

### 장비 설명

1. Stencil Printer	1.2m full vision 자동 프린터. Stencil 자동 Cleaner 기능 Windows 환경에서 제어합니다.
2. LED/범용 마운터 실장속도	0402에서 PLCC, QFP, 다양한 Chip 과 LED 범용작업 가능한 장비 입니다. 1.2m Tube LED 작업 부터 Switching Power, Controller 등 작업이 가능 Feeder는 Max 256개 가능하며 기본 Fly Vision 기능이 있다. 50 x 50mm Under Vision을 선택 , Tray 3개에서 8개 까지 설치 가능하다. 2 Head 6,400 cph / 4 Head 8,400cph In Line 작업을 위하여 별도의 Belt Conveyor 선택을 하여야 한다
3. Reflow	Reflow는 full Air Convection으로 Flux 필터 시스템이 기본 내장 되어 있다. 3 채널 Temperature Profiler. Quick Cool Down, 장비 환경 History 기능이 있으며, Tube LED 생산을 하지 않는 고객은 8 zone Reflow 선택 사용 가능하다.

- Loader, work Table은 제품 생산에 따라 길이가 상이 할 수 있습니다. Printer + LED P&P + Reflow의 길이는 10.4m 입니다



## 2-2. LED 혹은 범용 SMD생산 장비

Tube LED . 범용 Chip 실장 장비 구성

세부적인 SPEC은 [www.namaSMT.com](http://www.namaSMT.com) 방문 바랍니다



Model	PRINTER AP1200	MOUNTER BA388 V2 / V4	REFLOW CR-8000NP-F
	1. Double side board printing 2. Max 1200 x 300mm 3. Thickness : 0.4 ~ 5mm 4. Automatic Vision Alignment 5. Accuracy : +/-0.01mm 6. Stencil Auto Cleaner 7. Windows 7 base	1. 0201 (0.6x0.3mm) SOIC, PLCC, BGA,. μBGA,. CSP, QFP, up to fine-pitch 0.3mm 2. Fly Vision & Under Vision alignment (Max 50 x 50mm) 3. Head Q'ty. speed : 2head 6,400cph/4head : 8,400 cph 4. Work : Max. <b>1200 x 408</b> (Conveyor) 5. Feeder: Max.192 feeder(Conveyor) 6. Accuracy: +/-0.03mm 7. Solder Dispenser system (opt)	1. Heating Zone <b>8 Zone.</b> Max 350'c 2. Max.550 width . N2.(op) 3. 2 x <b>Flux Filter System.</b> 4. Cooling system function 5. 3 x Channel Temperature Profiler 6. reflow operation History backup 7. UPS Battery Backup System 8. Center rail Conveyor (op)
<b>Dimension</b>	● 2300 x 1704 x 1878 mm (1200kg)	● 1780 x 1370 x 1460 mm (1250 kg)	● 4800 x 1510 x 1550mm (1810kg)
<b>AC Power</b>	■ AC 220V 50/60Hz	■ AC 220V 50/60Hz , 4200W	■ 3P x380V/N 60Hz
<b>AIR</b>	⊙ 5 Bar / 75 psi	⊙ 5.5 Bar / 80 psi	⊙ 7.5 Bar / 90 psi

- 장비 설치에 따른 공간. 전기. Air등에 대한 자료 참고 바랍니다.



PRICE exwork

not include option & packing charge

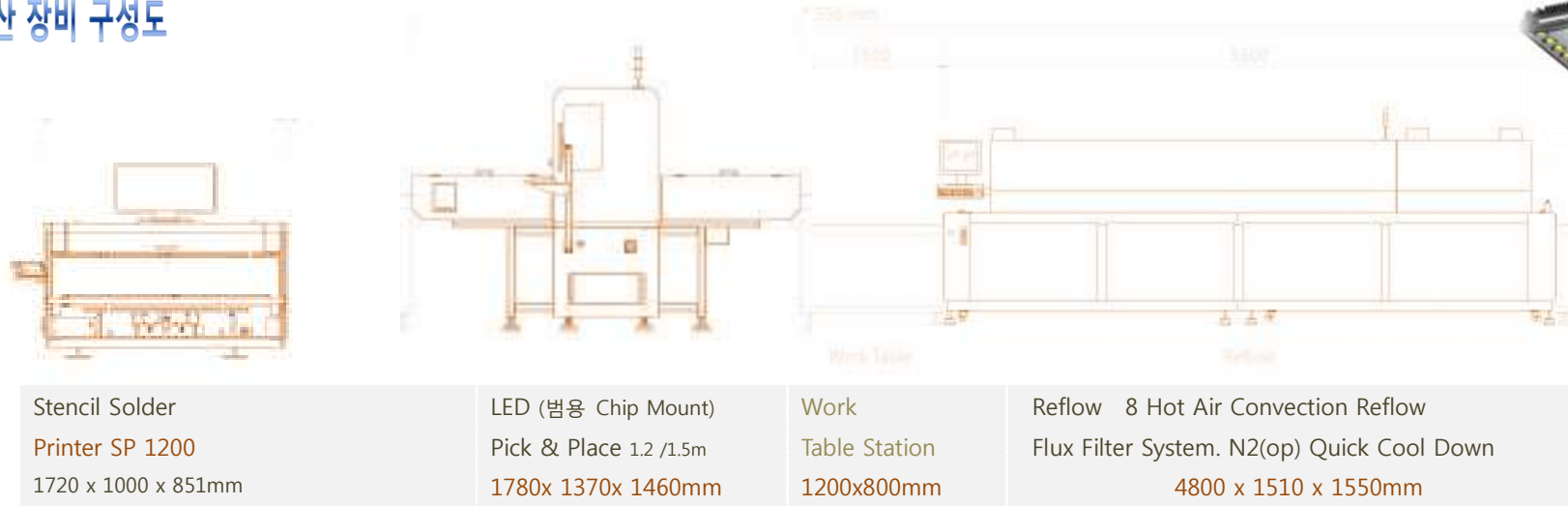


	Printer AP1200	SMD Pick & Place BA388 V2 / V4	Reflow CR-8000NP-F
Price	USD	1. BA 388 V2 / 2 head . USD 2. BA 388 V4 / 4 head . USD	1. 8 zone with Flux 필터시스템 . USD 2. 10 zone with Flux 필터시스템 . USD

- 판매는 OFFER 방식으로 진행 합니다. 이러한 이유는 고객에 따라 관세면제. 감면 등이 사업 품목에 따라 적용되기 때문입니다.
- 또한 장비 금액 외 Option + 포장 + 운송 + 통관 등에 대한 비용은 포함 되어 있지 않습니다

### 3. LED 전용 생산 장비 구성도

Chip 작업 범위  
FOR COMPONENTS:



Loader 1.2m	Stencil Solder Printer. AP 1200	Work Table Station	LED (범용 Chip Mount) Pick & Place 1.2 /1.5m	Work Table Station	Reflow 8 to 10 Hot Air Convection Reflow 2 x Flux Filter System. N2(op) Quick Cool Down	Work Table Station
Size	1720x1000x851.mm	1200x800mm	1780x 1370x 1460mm	1200x800mm	5650 x 1350 x 1559mm	1200x800mm

4V : 8Hr 120,000점 / 20Hr 300,000점  
6V : 8Hr 144,000점 / 20Hr 360,000점 Day



#### 장비 설명

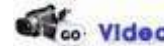
1. Stencil Printer	1.2m 반-자동 프린터. vision 은 2개 CCD camera 통하여 " Manual " 엘라이먼트 조절 하여 준다
2. LED 전용 마운터 실장속도	4개 혹은 6개 Fly Vision 기본 장착된 LED 전용 장비, Fly Vision은 1 x 0.5mm에서 8 x 8mm 까지 인식 ( 3 Head 모델은 14 x16mm) 4 Head 15,000 cph / 6 Head 18,000cph Conveyor는 table type이 기본이며 In Line 작업을 위하여 별도의 Belt Conveyor 선택을 하여야 한다
3. Reflow	Reflow는 full Air Convection으로 Flux 필터 시스템이 기본 내장 되어 있다. 3 채널 Temperature Profiler. Quick Cool Down, 장비 환경 History 기능이 있으며, Tube LED 생산을 하지 않는 고객은 8 zone Reflow 선택 사용 가능하다.

- Loader. work Table은 제품 생산에 따라 길이가 상이 할 수 있습니다. Printer + LED P&P + Reflow의 길이는 10.4m 입니다

### 3-2. LED 전용 생산 장비

Model	PRINTER ( 반자동 ) 1200	MOUNTER LD 812/ V4.V6	REFLOW CR-8000NP-F
	<ol style="list-style-type: none"> <li>1. Max : 1200 x 400mm</li> <li>2. Dimension : 1720 x 1000 x 850mm (L)</li> <li>3. Semi Automatic Stencil Printer</li> <li>4. CCD Vision Camera Alignment (Manual)</li> <li>5. Accuracy : +/-0.02mm</li> <li>6. Automatic Load &amp; Un Loading</li> <li>7. Operation Windows 7</li> </ol>	<ol style="list-style-type: none"> <li>1. Vision on the fly cameras</li> <li>2. Head Q'ty : 4 EA / 6EA</li> <li>3. Work:1200x300 (1200x250mm) Conveyor</li> <li>4. Speed: 15 000 cph / 18,000 cph</li> <li>5. Feeder Bank : Max.16</li> <li>6. Accuracy: +/-0.05mm</li> <li>7. Auto nozzle Change Station</li> </ol>	<ol style="list-style-type: none"> <li>1. Heating Zone 8 Zone. Max 350'c</li> <li>2. Max.550 width . N2.(op)</li> <li>3. 2 x Flux Filter System.</li> <li>4. Cooling system function</li> <li>5. 3 x Channel Temperature Profiler</li> <li>6. reflow operation History backup</li> <li>7. Center rail Conveyor (op)</li> </ol>
	<b>Dimension</b> ● 1720 x 1720 x 851mm 162kg <b>AC Power</b> ■ AC 220V 50/60Hz 1.2KW <b>AIR</b> ○ 5.5 Bar / 75 psi	<b>Dimension</b> ● 1780 x 1370 x 1460 mm (1250 kg) <b>AC Power</b> ■ AC 220V 50/60Hz , 4,2KW <b>AIR</b> ○ 5.5 Bar / 80 psi	<b>Dimension</b> ● 4800 x 1510 x 1550mm (1810kg) <b>AC Power</b> ■ 3P x380V/N 60Hz 65KW <b>AIR</b> ○ 7.5 Bar / 90 psi

- 장비 설치에 따른 공간. 전기. Air등에 대한 자료 참고 바랍니다.



PRICE exwork

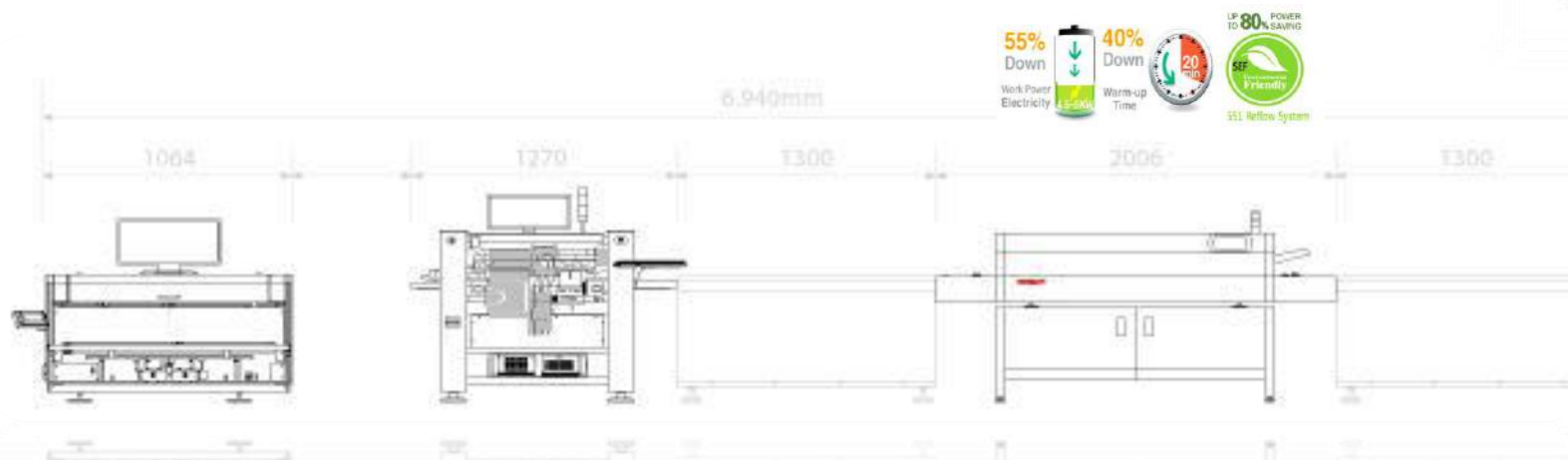
not include option & packing charge

	Printer AP1200	SMD Pick & Place BA388 V2 / V4	Reflow CR-8000NP-F
Price	USD	1. LD812V4 / 4 head USD 2. LD812V6 / 6 head USD	1. 8 zone with Flux 필터시스템 . USD 2. 10 zone with Flux 필터시스템 . USD

- 판매는 OFFER 방식으로 진행 합니다. 이러한 이유는 고객에 따라 관세면제. 감면 등이 사업 품목에 따라 적용되기 때문입니다.
- 또한 장비 금액 외 Option + 포장 + 운송 + 통관 등에 대한 비용은 포함 되어 있지 않습니다

#### 4. Medium 적용업종 : LED. 범용 SMD 실장을 위한 소형. 소량 다품종 생산을 위한 장비 구성. (LED. 범용 SMD 실장 위한 장비구성)

Chip 작업 범위



Loader 600x700.mm Size	Stencil Solder Printer SP 600/900 1100 x 1006 x 851mm	Work Table Station 600x700.mm	LED (범용 Chip Mount) Pick & Place 385V 1270 x 990 x 1320mm	Work Table Station 600x700.mm	Full Air Convection Reflow 551-15 2010 x 790x 550mm(Desk-Top)	Work Table Station 600x700.mm
------------------------------	---	-------------------------------------	---	-------------------------------------	---	-------------------------------------

1V : 8Hr 32,000점 / 20Hr 80,000점  
2V : 8Hr 51,200점 / 20Hr 128,000점 dav

#### 장비 설명

1. Stencil Printer	PCB 600mm. 900mm 이하의 반-자동 프린터. vision 은 2개 CCD camera를 통하여 수동으로 엘라이먼트 조절하는 장비 입니다.
2. LED/범용 마운터	01005. 0402에서 PLCC. QFP. 다양한 Chip 과 LED 범용작업 가능한 장비 입니다. Max 350≡ 435mm 실장, Switching Power. Controller 등 작업이 가능 Feeders는 Max127개 , Conveyor 사용 시 64개 가능하며 기본 Fly Vision 기능이 있다. 50 x 50mm Under Vision을 선택 가능하다.
실장속도	1 Head 4,000 cph 2 Head 6,400 cph . Solder paste Dispenser. U-cad 변환 가능, 원격 Service 기능 선택 가능
3. Reflow	상5 zone / 하5 zone. Cooling 1 zone으로 이루어진 full Air Convection Reflow LED 생산제조 업종에서 제일 많이 사용하는 회사 Reflow 온도 프로파일러 내장, Touch LCD Panel, WiFi, WLAN 환경 사용 Dual Control, 저.소비 저 전력 Reflow 장비 5. 8. 10 Zone 의 Model 이 있음



<https://youtu.be/ZL3Y9Zazt0o?list=UUAY7dGHYuXRdxA7nHB7Z52>



4-2. Medium  
(LED. 범용 SMD 실장 위한 장비)



Solder Dispenser



친환경 에너지상 수상



SPEC

MODEL	PRINTER (SP 600.L/900,L/1200,L)	MOUNTER BA385V1 / V2	REFLOW 551-15 / 551-20
	1. Max : 600 x 400mm 2. Extension Size : 600 x 600mm (SP 600L) 3. Semi Automatic Stencil Printer 4. CCD Vision Camera Alignment ( Manual ) 5. Accuracy : +/-0.01mm 6. Automatic Load & Un Loading	1. Head Q'ty : <b>1</b> or / <b>2</b> head 2. Speed : 4,000cph / 6,400 cph 3. Board : <b>440 x 350mm</b> (WO/Con) 4. Max. 127개 / 64개 Conveyor 5. Dispenser for Bond / Solder (op) 6. Accuracy : +/-0.03mm	1. Top 5 / under5 zone ( Top 8 /Under 8.opt). 2. Max Conveyor .405mm 3. Energy Power Max 80% Saving 4. EU 안전.에너지 8항목 승인장비 5. Built-in temperature profiler 6. 내구성 . 품질이 뛰어난 독일 SEF제조 장비
<b>Dimension</b>	● 1064 x 1006 x 851mm (SP600), 108kg ● 1100 x 1100 x 851mm (SP600L), 135kg	● 1270 x 990 x 1320 mm , 710kg	● 2010 x 790 x 550mm, 190kg
<b>AC Power전기</b>	■ 220V(AC) 50/6Hz 200W	■ 220V(AC) 50/60Hz 400W	■ 3 x 380V. + (N) 220V 50/60Hz 12A
<b>AIR</b>	⊙ 5.5 bar	⊙ 5.5 bar	⊙ no need



<https://youtu.be/ZL3Y9Zazt0o?list=UUAy7dGHYXRdxA7nHB7Z52w>

- 장비 설치에 따른 공간. 전기. Air등에 대한 자료 참고 바랍니다.

PRICE exwork

not include option & packing charge

	Printer AP600/900	SMD Pick & Place BA385 V1 / V2	Reflow 551-15
Price	USD	1. BS 385V1 / 1 head USD 2. BS 385V2 / 2 head USD	1. 5 zone without Base stand USD 2. 9 zone with Base cabinet. USD

- 판매는 OFFER 방식으로 진행 합니다. 이러한 이유는 고객에 따라 관세면제. 감면 등이 사업 품목에 따라 적용되기 때문입니다.
- 또한 장비 금액 외 Option + 포장 + 운송 + 통관 등에 대한 비용은 포함 되어 있지 않습니다

## 5. Lab Small & Multi

적용업종 : Lab. 연구개발. 산학연. 소량 다품종 LED 및 소량 다품종 Chip 실장 공정

Chip 작업 범위



Printer  
S80



Pick & Placer  
10P



Reflow  
4060



Model	Stencil Solder (Manual) <b>S80</b>	LED & Chip Pick & Place <b>10P / 15P</b>	Small Batch Oven ( Big Size PCB ) <b>4060</b>
Size	580 x 320 x 260mm	870 x 640 x 336mm	680 x 500x 220mm

<https://youtu.be/P3V9VPCCrDA>

<https://youtu.be/mn0BSyZASjg?list=UUAy7dGHYuXRdxA7nHB7Z52w>


### 장비 설명

1. Stencil Printer	Manual 수동 프린터 Frame Size 300 x 400mm 양면 프린트 가능 X. Y. Z. D 조정가능. Frame Balance Weight가 있어 보다 쉽고 효율적인 Stencil Print 가능. 누구나 쉽게 작업이 가능한 수동 방식, Fame교체 시간 짧음
2. LED/범용 마운터 실장속도	0402에서 8. 12. 16mm tape feeders 기본 제공, 장비 외 다른 추가 구성 없이 사용 가능. Air 진공 Pump내장, 2 Head ( 4 Nozzle ) 양면 작업가능, LCD Display 창에서 직접 data 입/출력 , SD Card Memory 방식, PC에서 좌표 변화작업 가능, 누구나 간편하게 작업가능, 숙련시간 단축 / Stick feeder 5개 / IC Tray 1개 / Bulk Station 10개 등 다양한 사용고객에 따라 Application 가능 작업속도 최대 7,000 cph Feeders Max 10P model 27개, 15P 기본 27개 확장 50개 8mm 기준 /
3. Reflow	400 x 600mm 이하의 PCB Reflow soldering Small Oven 장비, 6개의 최상의 온도 프로파일 저장 2개의 고객의 Edit Channel total 8 parameter 설정온도에 따라 Real 온도 변화 Display, 작업이 끝나면 Beep Signal 알려줌, 전원 220V 단상 / 누구나 작업 쉽게 운영 가능한 장비

- 세부적인 자료를 Web site 방문을 추천 드립니다.

## 5-2. Lab Small & Multi

### 소량 Sample 생산 적합 장비. 연구소

Model	PRINTER S80	MOUNTER 15P	REFLOW 4060
 <b>SPEC</b>	1) PCB Max 250 × 300 (mm) 2) X.Y.Z.D 세밀조정 3) Double Side Printing 4) Universal PCB Fixture (Standard) 5) Repeatability: ±0.01mm 6) Stencil Frame Balance Weight	1) Head Q'ty : 2 EA 2) Work Area : <b>370 x 450mm</b> 3) Max Speed: 10,000 cph / 70,000(10P) 4) Components Tape(8/12/16mm),BLUK 5) Feeder: 27개 (Standard) Max.50 개 6) Accuracy : +/-0.03mm	1) Work : 400 x 600mm ( Big Size ) 2) IR Heating type. Max 280°C 3) 6개 최상의 Profile 저장 / 2개의 EDIT Mode 4) 온도 설정 온도 Profile 실시간 Graphic Guide 5) Automatic 작업 종료 알림 Service 6) 220V 단상 /60Hz
	<b>Dimension</b>	580×320×260 mm, ( 14kg )	870 x 640 x 336mm, 45kg
<b>전기</b>	No needs	220V(AC) 50 /60Hz. 160 Watts	AC220V / 60Hz, 2500W

PRICE exwork (직구 판매)

not Include option & packing charge

	Printer S80	SMD Pick & Place BA385 V1 / V2	Reflow 551-15
Price	원	1. 10P / 2 head KRW 2. 15P / 2 Head KRW	1. 5 zone without Base stand <b>KRW</b>

- 판매는 수입 대행 방식으로 진행 합니다. 제품의 교육 동영상 및 한글 설명서 제공. 이러한 판매는 고객이 가장 경제적 구입이기 때문 입니다.
- 당사에서 수입 판매 시 가격이 상승 됩니다. 본 품목은 제조사 공장 출고 가격 이며, 포장+운송+관세+기타 비용이 추가 됩니다.
- 환율 변동에 따라 가격이 변동 될 수 있습니다.

친환경 Cleaning Reflow 장비

Model 비교 Spec



기본 Flux Filter Built in System



Built-In Flux Filter to Prevent Excess Residue From Exhaust System

Feature	4000T 4 Zone	4000C 4 Zone	5000F 5 Zone	6000 6 Zone	8000 10100 8 / 10 Zone
1. N2 Available	No	No	Yes / Not	Yes	Yes
2. Mesh Conveyor Width	500mm	500mm	570mm	570mm	570mm
3. Chain Conveyor	N/A	400mm	450mm	450mm	450mm
4. Heating Zones	4 upper, 2 lower	4 upper, 2 lower	5 upper, 5 lower	6 upper, 6 lower	8 upper, 8 lower/ 10 / 10 zone
5. Heated Tunnel Length	1320 mm	1320 mm	1910 mm	2050 mm	2700 mm / 3400 mm
6. Delta T	±2° C	±2° C	±2° C	±2° C	±2° C
7. Max Temperature	300° C	300° C	350° C	350° C	350° C
8. Flux 필터 시스템	No	No	Yes	Yes	Yes
9. Control	Touch Screen	PC	PC	PC	PC
10. 온도 프로파일러	Yes	Yes	Yes	Yes	Yes
11. Dimension. ( D.W.H ) mm	2000 x 1200 x 1450	2000x1200x1450	3040x1380x1445	4150x1510x1550	4800x1510x1550 5200x1510x1550
14. Weight	700kg	750kg	1220kg	1510kg	1810kg / 2110kg
15.AC Power	380V 3 Phase. N .PE				
16. Maximum Amps	60A	60A	97A	105A	122A / 138A



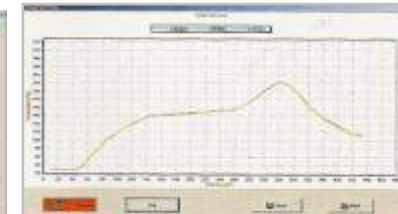
Automatic Hood-Lift Easy Access to Heating Chamber



Conveyor Mechanism Includes Automatic



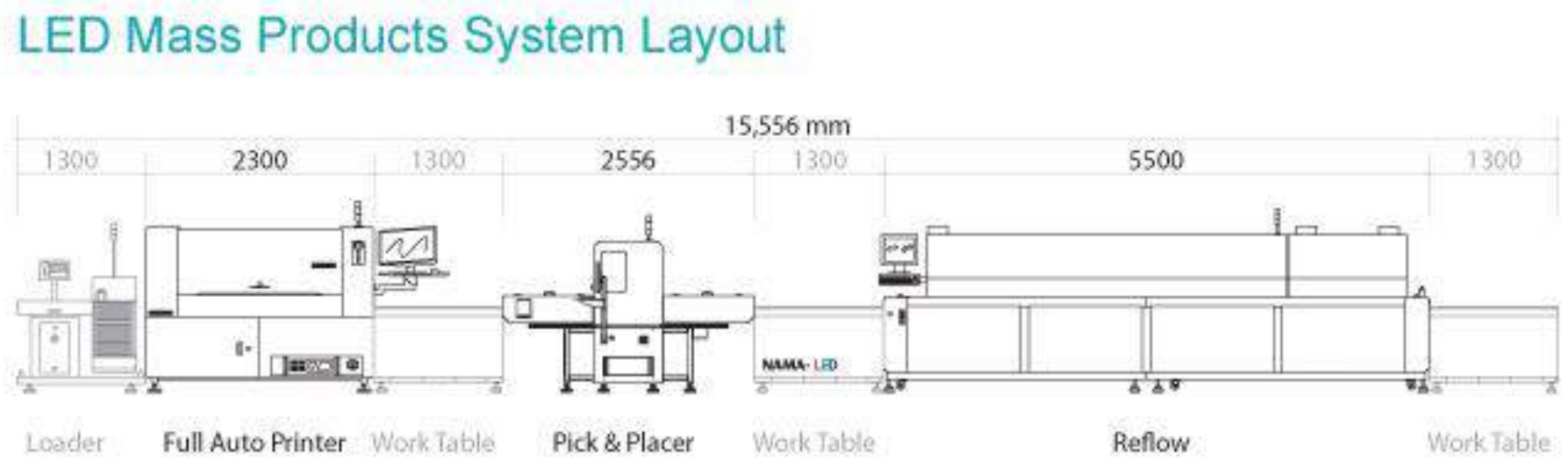
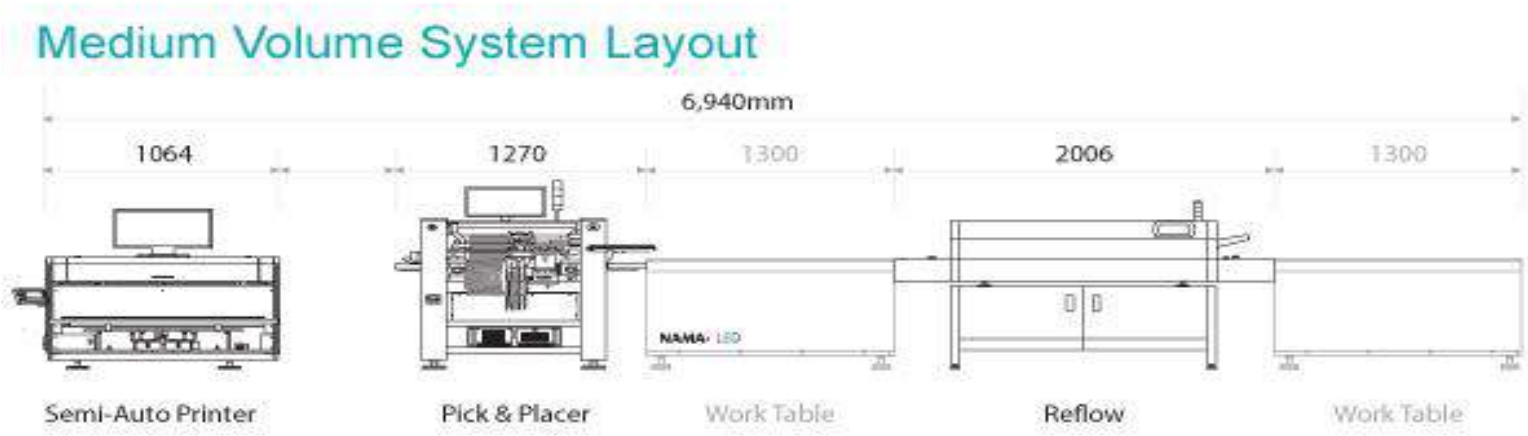
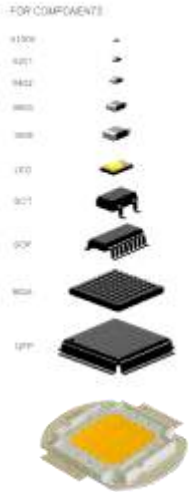
Software is Highlighted by Its Attractive



Tem. Profile Recording Full-Screen

### 장비 필요공간 Lay Out

LED Mass & Medium 생산을 위한 장비설치 필요공간 입니다.  
작업 table은 제품 생산에 따라 적용 및 Size가 상이 할 수 있습니다..



# 925 V-Cutting Machine for Tube LED PCB



Max 1900% 효율  
**In Line Multi  
Tube LED V-Cutting**



**Product name :**

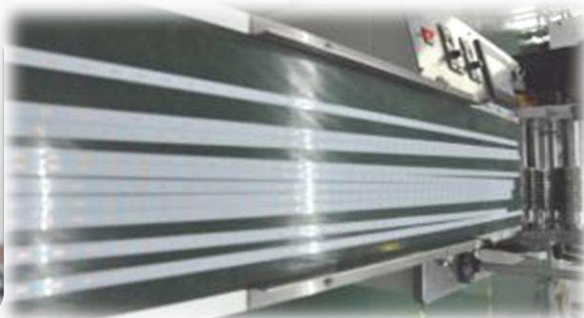
PCB V cutting machine, LED aluminum plate cutter multi group multi blade Cutting Machine

LED aluminum plate cutter multi group multi blade cutting machine LED separator.

- In Line 연속작업 가능.
- 작업수량 설치 작업량 까지 V-Cutting
- Array 최대 19배열 까지 동시 자동 V-Cutting.



<http://tvpot.daum.net/v/v9a553GcSUZZIWof3Gfkfv>



빠른 배열 변경 Fixture E ring 사용으로 빠른 변경 가능

Model	Description	N 925
1	Dimension	2160x570x1050mm
2	Max Length of PCB	unlimited
3	Material of PCB	<b>LED Bar LED , Fiber Board, Aluminum Board, and Special Plate</b>
4	Cutting Thickness	0.2mm ~ 3mm
5	Min Cutting Width	8mm
6	Max Cutting Length	100mm
7	Blade Material	SKD11
8	Max Group Q'ty	19 Group
9	Speed	300 ~ 500mm / S
10	Power	220V 60/50Hz 40 Watts (110V/60Hz)
11	Weight	178Kg

# 700x V-Cutting Machine for LED PCB

1.2/2.4m



Max 300% 효율  
**Metal 1.2/ 2.4m**  
**V- Cutting**  
 Tube LED V-Cutting



**3단 Blade 방식**  
**Metal PCB Cutting ( SPEED 조절)**

1,2m ~ 2.4m LED Light PCB Separator aluminum LED V-cutting machine aluminum plate cutter LED strip PCB (3 Pair Knife)

- **Cutting Thickness** : 0.2mm ~ 3mm
- **Application** : LED panel , fiberboard , aluminum plate aluminum substrate, copper. substrate., FR4, glass fiber board

- Metal PCB V-Cutting 작업
- 3단계 Cutting으로 칼날 손상 극소
- 하단 Blade 자동 조절 가능 Foot Switch 작동 가능
- 1.2m .2.4m 작업 가능한 Platform



Model	Description	N 700	N 712	N 724
		No platform	1.2m platform	2.4m platform
1	Dimension	325x380x330mm	1200x500x330mm	2400x500x330mm
2	Max Length of PCB	unlimited		
3	Cutting Speed	<b>80,120,200,400mm/s</b>		
4	Cutting Thickness	0.2mm ~ 5mm		
5	Weight	33kg	33kg +6Kg	33kg +15Kg
6	Packing Size	390x340x340mm	390x340x340mm( Platform ) 1200x360x70mm ( Platform )	
7	Weight	50Kg	56Kg	68Kg
8	Voltage . power	220V 50/60Hz 40Watts		

# 500x V-Cutting Machine for LED PCB

1.2/2.4m



Max 300% 효율  
FR4 1.2/ 2.4m  
V- Cutting  
Tube LED V-Cutting



1,2m ~ 2.4m LED Light PCB Separator aluminum LED V cutting machine aluminum plate cutter LED strip PCB (1 Pair Knife)

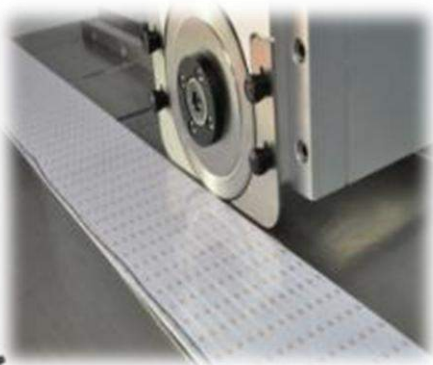
1 개의 Blade Pair 로 V cutting 작업

□

■ Cutting Thickness : 0.2mm ~ 3mm

■ Application : LED panel , fiberboard , aluminum plate , aluminum substrate, copper substrate, FR4, glass fiber board

1.2m /2.4m LED T8 Light PCB Separator aluminum led cutting machine aluminum plate cutter LED strip PCB Detailed Product Description LED PCB up to 2400 mm PCB Separator Machine



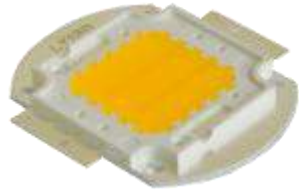
250만원. Cutting Unit  
Double Blade



동영상 : <http://tvpot.daum.net/clip/ClipView.do?clipid=67981898&rtcs=y>

Model	Description	N 500	N 512	N 724
		No platform	1.2m platform	2.4m platform
1	Dimension	325x380x330mm	1200x500x330mm	2400x500x330mm
2	Max Length of PCB	unlimited		
3	Cutting Speed	0 - 1000mm/S		
4	Cutting Thickness	0.2mm ~ 5mm		
5	Weight	33kg	33kg +6Kg	33kg +15Kg
6	Packing Size	390x340x340mm	390x340x340mm ( Platform ) 1200x360x70mm ( Platform )	
7	Weight	50Kg	56Kg	68Kg
8	Voltage . power	220V 50/60Hz 40Watts		





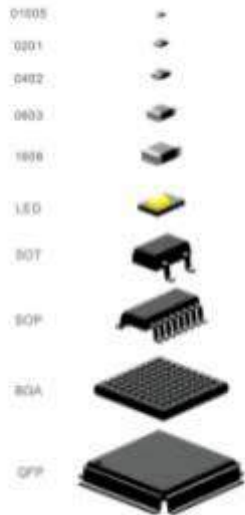
경제적이고 LED 효율적인 생산을 위하여 독일의 Autotronik-SMT GmbH 회사의 LED 전용 범용 Pick & Place 장비가 기여 하겠습니까.

## Autotronik-SMT 장비 비교표



Model	BA684V4	BA392V1	BA392V2	BA385V1	BA385V2	BA388V2	BA388V4	BS281
Number of Heads	4	1	2	1	2	2	4	1
Max. Speed (IPC9850)	10500cph (8400)	4000cph (3400)	6400cph (5500)	4000cph (3400)	6400cph (5500)	6400cph (5500)	8400cph (7000)	3000cph (2500)
Feeder capacity (8 mm)								
- Standard	96	160		128			256	64
- With conveyer	96	96		64			192	-
IC Tray capacity	up to 4 Waffle Trays	up to 4 Waffle Trays		up to 2 Waffle Trays			up to 8 Waffle Trays	up to 3 Waffle Trays
Component Size (mm)								
- by vision on the fly head	(Smallest) 0.6mm X 0.3mm (Option) 0.3mm X 0.2mm (Largest) 16mm X 14mm							
- by BV01005 (option)	(Smallest) 0.3mm X 0.2mm							
- by BV38 (option)	(Largest) 38 X 38mm / (by optional Diagonal Vision Processing software : 150mm X 100mm)							
- by BV50 (option)	(Largest) 50 X 50mm / (by optional Diagonal Vision Processing software : 150mm X 100mm)							
Placement Accuracy								
- normal component (CHIP)	± 0.05mm	± 0.05mm		± 0.05mm			± 0.05mm	± 0.05mm
- IC, QFP (option)	± 0.03mm	± 0.03mm		± 0.03mm			± 0.03mm	± 0.03mm
Rotation	0°-360°(0.045°/step)	0°-360°(0.045°/step)		0°-360°(0.045°/step)			0°-360°(0.045°/step)	0°-360°(0.09°/step)
Maximum Placement Area								
- Without conveyer	-	650mm X 350mm		435mm X 350mm			1250mm X 330mm	320mm X 415mm
- With conveyer	650mm X 420mm	650mm X 330mm		435mm X 350mm			1250mm X 420mm	-
- With dual stage conveyer	1200mm X 420mm	1200mm X 330mm		-			1800mm X 420mm	-
Power supply	220V	220V		220V			220V	220V
Power	3810W	1810W	2360W	1510W	2360W	3520W	3820W	1200W
Pressure	75psi (5.5bar), 5L/min	75psi (5.5bar), 200L/min		75psi (5.5bar), 200L/min			75psi (5.5bar), 200L/min	75psi (5.5bar), 100L/min
Machine Size (mm)	1550 X 1210 X 1430	1080 X 1050 X 1350		990 X 1270 X 1320			1780 X 1370 X 1460	825 X 1060 X 590
Weight	1340KG	550KG		660KG			1100KG	200KG

### FOR COMPONENTS :



Pick and Place Solutions for LED Board Assembly

한번에 1.2M 1.5M 실장가능한 LED 전용 Mount ( 2가지 model )

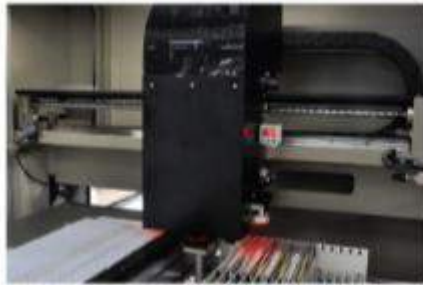
Specification



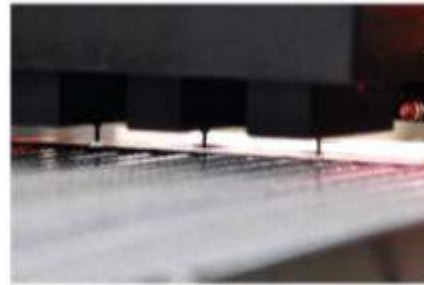
Features

- Ⓞ True 'Vision On the Fly' Alignment
- Ⓞ Fiducial recognition and coordinate correction
- Ⓞ Assembles LED boards up to 1200 mm long in a single pass (option for 1800mm long)
- Ⓞ Positive air puffing at the pick-up nozzle ensures release of 'sticky' LED components during placement
- Ⓞ Large working platform allows multiply PCB production in one stage (for same type of PCB)
- Ⓞ Uninterrupted production by auto-selection for alternative when feeder is empty
- Ⓞ High-precision ballscrew drive
- Ⓞ Tape feeder allows tape connection to minimize production interruption

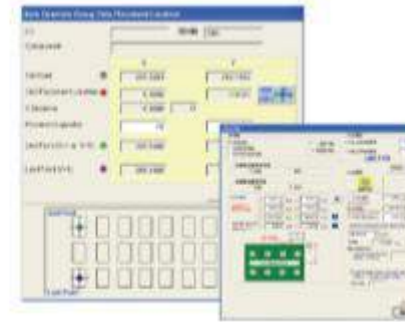
Machine Model	LD812V4	LD812W3
<b>PCB specification</b>		
Max. board size (standard)	1200mm X 300mm	1200mm X 300mm
(option conveyor)	1200mm X 260mm	1200mm X 260mm
Board thickness	0.2mm to 3mm	0.2mm to 3mm
Board fixing principle	Magnetic fixture (option conveyor)	
<b>Placement Specification</b>		
Alignment principle	Vision on the fly camera	
No. of placement heads	4	3
Placement rate (IPC 9850)	15 000 / hour	10 000 / hour
Component size	0.6mm x 0.3mm to 8mm x 8mm	1mm x 0.5mm to 16mm x 14mm
<b>Feeder capacity</b>		
Feeding capacity	Max. 16 feeder ports (8mm tape)	
<b>Mechanical Specification</b>		
XY axis drive mechanism	X axis: placement head; Y axis: board transport	
Board loading method	Working stage (option conveyor)	
In line production	Supported by option conveyor system	
Placement accuracy	+/-0.05mm	
X-Y Axis Resolution	0.02mm	
Z Axis Resolution	0.02mm	
R Axis Resolution	0.18 degree	
<b>Programming</b>		
Operation system	Windows XP based	
Support language	English (mult language support)	
Programming	Easy programming (option CAD import)	
<b>Physical specification</b>		
Approximate Net Weight	450KG	445KG
Machine dimension (LxWxH)	2630 X 1130 X 1490	2630 X 1130 X 1490
<b>Facility Requirements</b>		
Air Pressure	5.5 bar	5.5 bar
Standard Voltage	220V(AC)	220V(AC)
Power	2200W	2200W



Heavy-duty welded, uni-body steel frame provides stability for precision placements even at high speeds



Upward-aimed true 'Vision On the Fly' Alignment cameras on the pick & place heads allow easy set-up for a wide range of LED components



With simply parameters inputs, the Windows-based software calculate the component coordination automatically



UCAD® universal CAD import and conversion for direct transfer of PCB data from ASCII, AutoCAD and Excel data formats



Support various PCB board type, includes, LED boards up to 1200 mm long (or option to 1800mm), flexible PCB , or circular PCB



Flying vision alignment on various LED components as well as SMDs. Teflon® nozzles also available for sticky LED components



Software tools analyze placement data and component mix to provide optimum feeder arrangement that minimizes head travel and tool changes



Real time monitoring screen for previewing production progress, production speed and production quantity during production

# SP600/SP1200/BS1300/BS1400

SEMI / FULLY AUTOMATIC SMT STENCIL PRINTER



## SEMI-AUTOMATIC STENCIL PRINTER SP600/SP1200

- **Huge print area capability**

The huge print area capability allows printing up to 1200mm x 400mm. It accepts standard SMT frame sizes from 350 x 350 mm to 1480 x 500 mm (for SP1200), or 350 x 350 mm to 736 x 736 mm (for SP600L)

- **Vertical Separation of Stencil from PCB**

4 corner ball screw system provides excellent separation control of stencil for high quality solder paste printing

- **Programable Speed Control for both squeegee movement and stencil separation**

- **Dual Camera system for quick PCB**

SP600



SP1200



SEMI-AUTOMATIC STENCIL PRINTER  
**BS1300**

FULLY-AUTOMATIC STENCIL PRINTER  
**BS1400**

The Model BS1300 and BS1400 is a economic and accurate semi-automatic SMT stencil printer, suitable for small and medium volume production. Including the dual camera system with OPVA software in BS1300, the ultra-fine pitch printing for 0.3mm QFP IC is easy to obtain. BS1400 includes the powerful AT-align automatic fiducial finding and PCB board offset adjustment system.

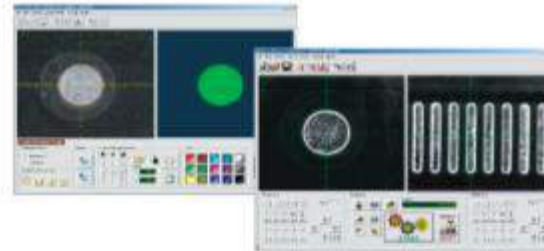


■ **High Accuracy & Repeatability Printing**

PCB is fixed on a flexible mounting table which is suitable for single side and double PCB. Adjustment of PCB position, movement of Mounting table and squeegee are all moving on precision linear guides to provide high accuracy & repeatable movement. All parameters—print speed, stroke length, squeegee pressure, etc. - are fully programmable.

■ **Dual stroke control**

BS series printers feature a dual squeegee/dual stroke control system. Double squeegee with dual stroke control system provide efficient saving of solder paste during printing.

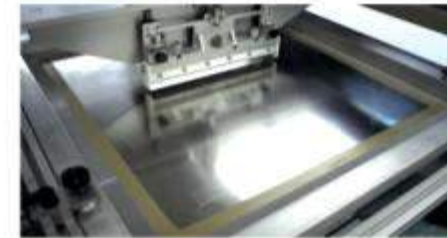


■ **Overlay Pattern Vision Alignment (OPVA) Software**

OPVA software is specially design for BS1300, the user can align the live image of the PCB to a computer generated overlay pattern. Any fiducial point or PCB pad can be selected as the reference for the overlay pattern, the shape and size of the overlay pattern is selectable, the center of the overlay pattern can be high accurately located by simple single step movement on the computer screen with the resolution of 0.0085 mm per step. PCB can be aligned easily within a few seconds by user.

■ **High Accuracy & Repeatability Printing**

PCB is fixed on a flexible mounting table which is suitable for single side and double PCB. Adjustment of PCB position, movement of Mounting table and squeegee are all moving on precision linear guides to provide high accuracy & repeatable movement. Double squeegee with dual stroke control system provide efficient saving of solder paste during printing.



■ **Large print area capability**

The standard print area capability allows printing up to 400mm x 400mm. High flexibility allows upgrading the print area capability up to 400mm x 500mm. Both obverse and reserve sides of screen are also applicable.





SMT 전문 판매 회사

Since 1988  
www.namaSMT.com

최다 판매 장비

- Lab & Small Oven (Pb, N2 Profiler)
- Reflow (3.4.5.7.9.12 Zone)
- Vapor (증기) Reflow **New!**
- Temperature Profiler (유/무선)
- Chip Mounter (Full Auto 1.2.4 Head)
- Semi Auto Pick & placer (반자동)
- PCB Cleaning Machine (PCB 세척기)
- PCB Coating Machine (PCB 코팅기)
- SMD Parts Counter (부품 계수기)
- 기타 PCB 생산 기자재 취급

INFO TEL  
+82.2.3141.0889

World Distributors

中国 심천 소주 남경 군산 청도  
Asia 베트남 태국 인도 리오스

